

Basic Beatbox Manual

Basic BeatBox
 Simple beatbox for Palm OS

© Quagliozi Eric 2010
<http://www.midsiku.net>

Ok

1/ First launch

The first time you launch the application, the default sound bank database is created and useless application resources are removed from the prc file :

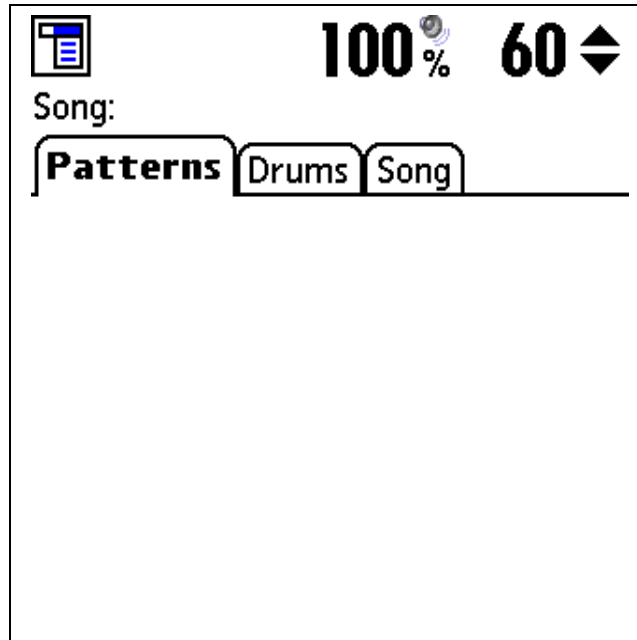


Click on the “Restart application” button (this button appears at the end of the database creation process).





2/ Overview

The main features are accessible from the main form: volume control, tempo (beat per minute), patterns and song management.

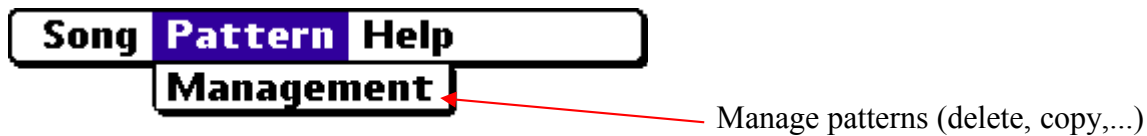
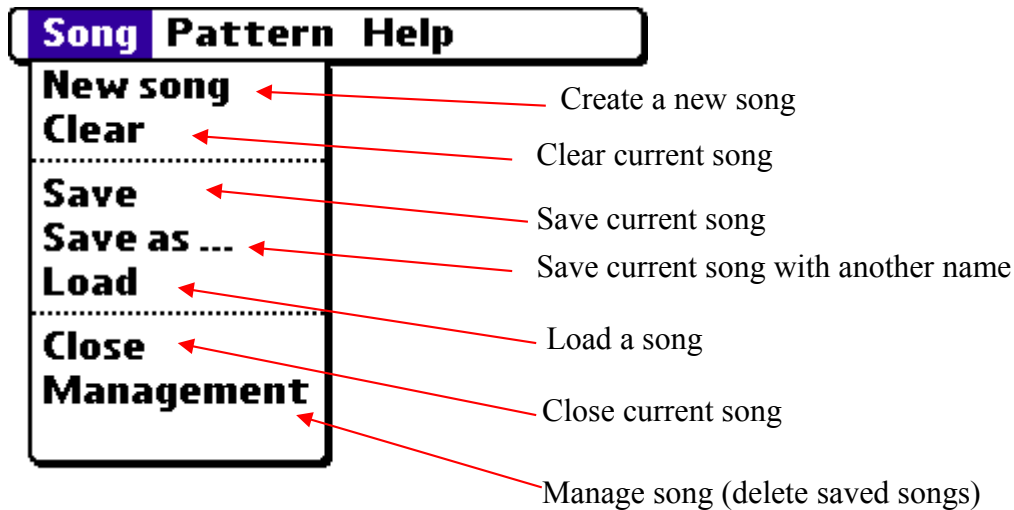
By default no song is created, you must create a new song for editing patterns and song.



The main commands:

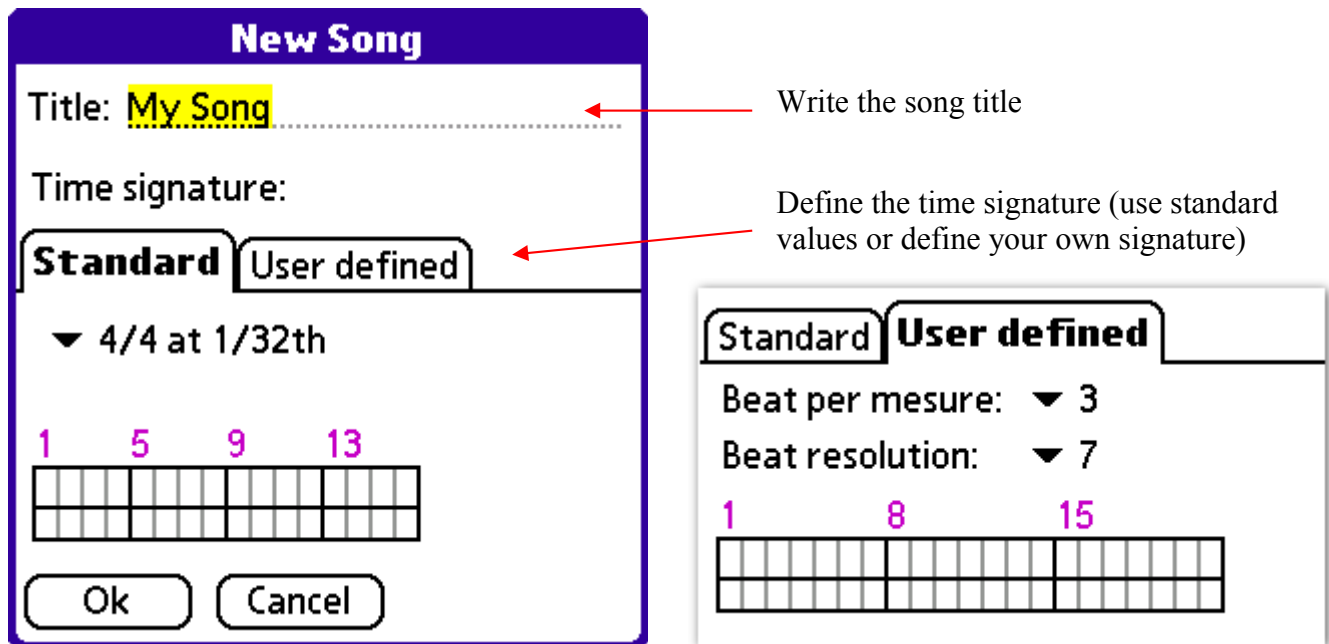
	<p>Show the main menu</p>
<p>100%</p>	<p>Volume control: Clicking on the volume value lets show the form for changing the volume</p> 
	<p>Headphones mode: Clicking on this button lets you enable/disable the headphones mode (the sound volume is internally diminished to about 18 db).</p>
<p>60 ⇄</p>	<p>Tempo Control: Clicking on the BPM value lets show the form for changing the BPM, you can also use the arrow buttons for better accuracy.</p> 

3/ Main Menu Overview

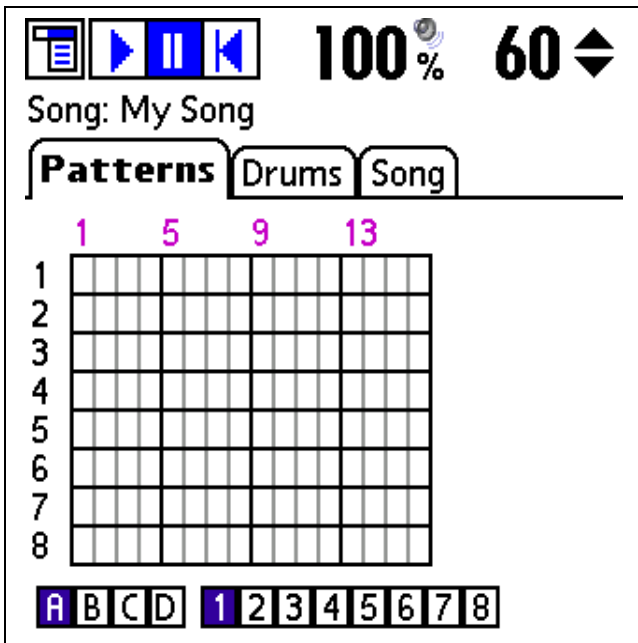


4/ Editing Song and patterns

Let's create a new song:

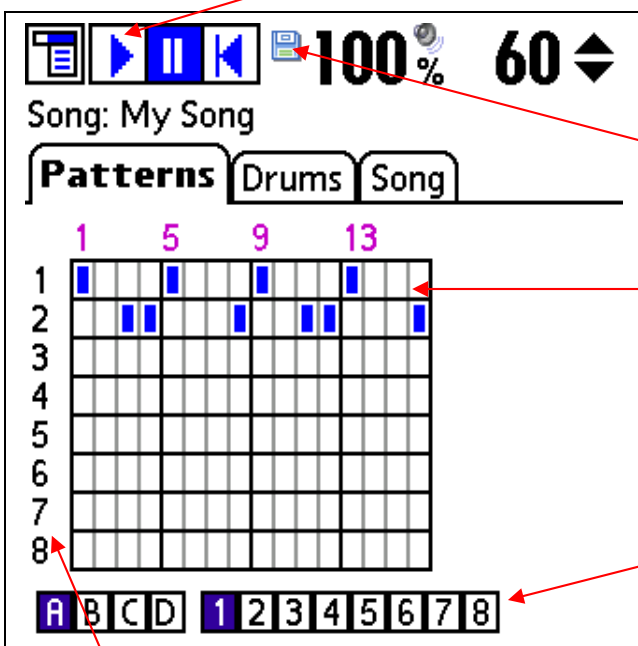


Now we've got an empty song:



Songs are based on patterns (up to 100), so we must edit patterns before creating a song. Patterns are organized in four banks from A1 to D8.

That toolbar appears, you can play the song while you're editing it.



This icon indicates that song has changed (you will have to save it).

Click within the pattern area to toggle a beat.

Select the pattern that you want to view or edit.

Each pattern can use eight different instruments (or sounds) organized as tracks.

For each used track we have to assign an instrument:

Song: My Song

Patterns **Drums** Song

	Volume	Bank	Sample	
1				
2				
3				
4				
5				
6				
7				
8				

Mute voice

Current instrument
(click to select an instrument)

Volume of instrument

Sample for instrument 0

Bank	Sample
Techno Mix 1	909bd1
TR 909	909bd3
	909bd6
	909bd9
	909chh1
	909chh2
	909crsh
	909lt1

100%

OK Cancel

(The instrument sound is played when you select it)

Headphones mode and volume.

Song: My Song

100% 60

Patterns **Drums** Song

Volume	Bank	Sample	
1	TR 909	909bd6	
2	TR 909	909tom1	
3			
4			
5			
6			
7			
8			

Let's create a new pattern from the A1 pattern: from main menu, select Pattern > Management. Check From A1 to A2 and click on the "Copy" button and then click on "Done" button:

Pattern management

From: **A** B C D 1 2 3 4 5 6 7 8

To: A B C D 1 2 3 4 5 6 7 8

Applies to:

<input checked="" type="checkbox"/>	1	TR 909 - 909bd6
<input checked="" type="checkbox"/>	2	TR 909 - 909tom1
<input checked="" type="checkbox"/>	3	-
<input checked="" type="checkbox"/>	4	-
<input checked="" type="checkbox"/>	5	-
<input checked="" type="checkbox"/>	6	-

Copy Swap Clear Done

Let's add a new instrument to the A2 pattern:

100% 60

Song: My Song

Patterns Drums Song

	1		5		9		13							
1	■		■		■		■							
2		■	■		■		■	■	■				■	
3	■		■		■		■	■	■					
4														
5														
6														
7														
8														

A B C D 1 2 3 4 5 6 7 8

Now let's make a song:

100% 60

Song: My Song

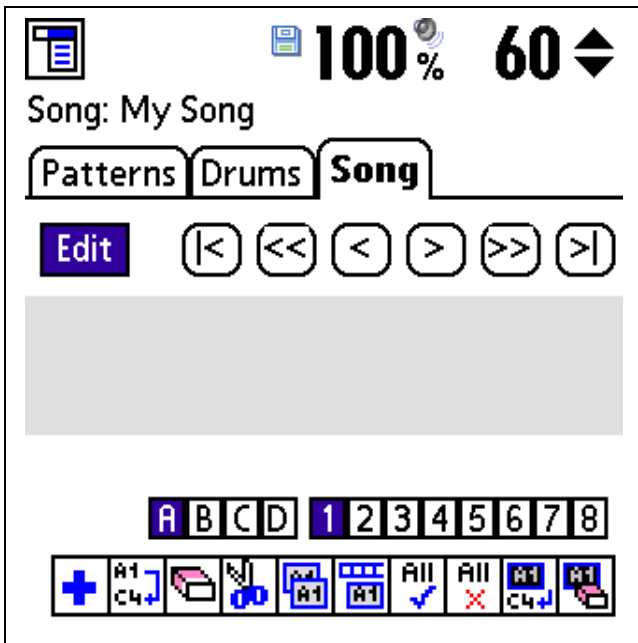
Patterns Drums **Song**

Edit ↻

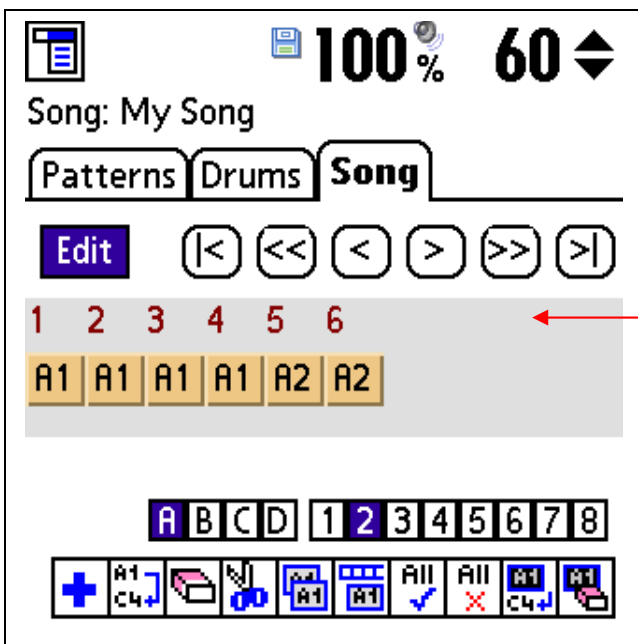
← The song area

↖ Edit mode ↘ Loop mode

Click on "Edit" button:



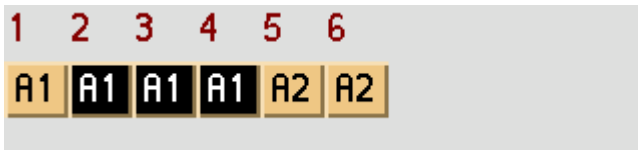
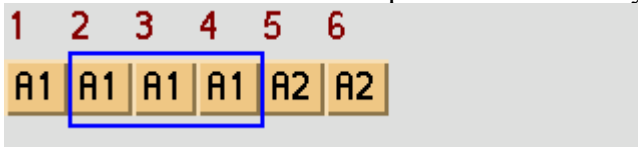
Click "+" button to add A1 pattern, select the A2 pattern and add it by using the same "+" button:



You can use buttons or the stylus for moving within the song.

Ok, we have made a small song (it sounds bad, but just for the example).

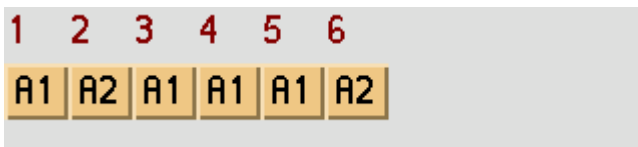
You can select one or several patterns with the stylus:



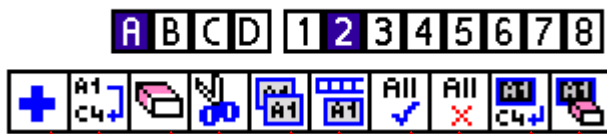
By holding the stylus down while selecting patterns, you can drag and drop the selected patterns:



Patterns are always inserted after the selected one.



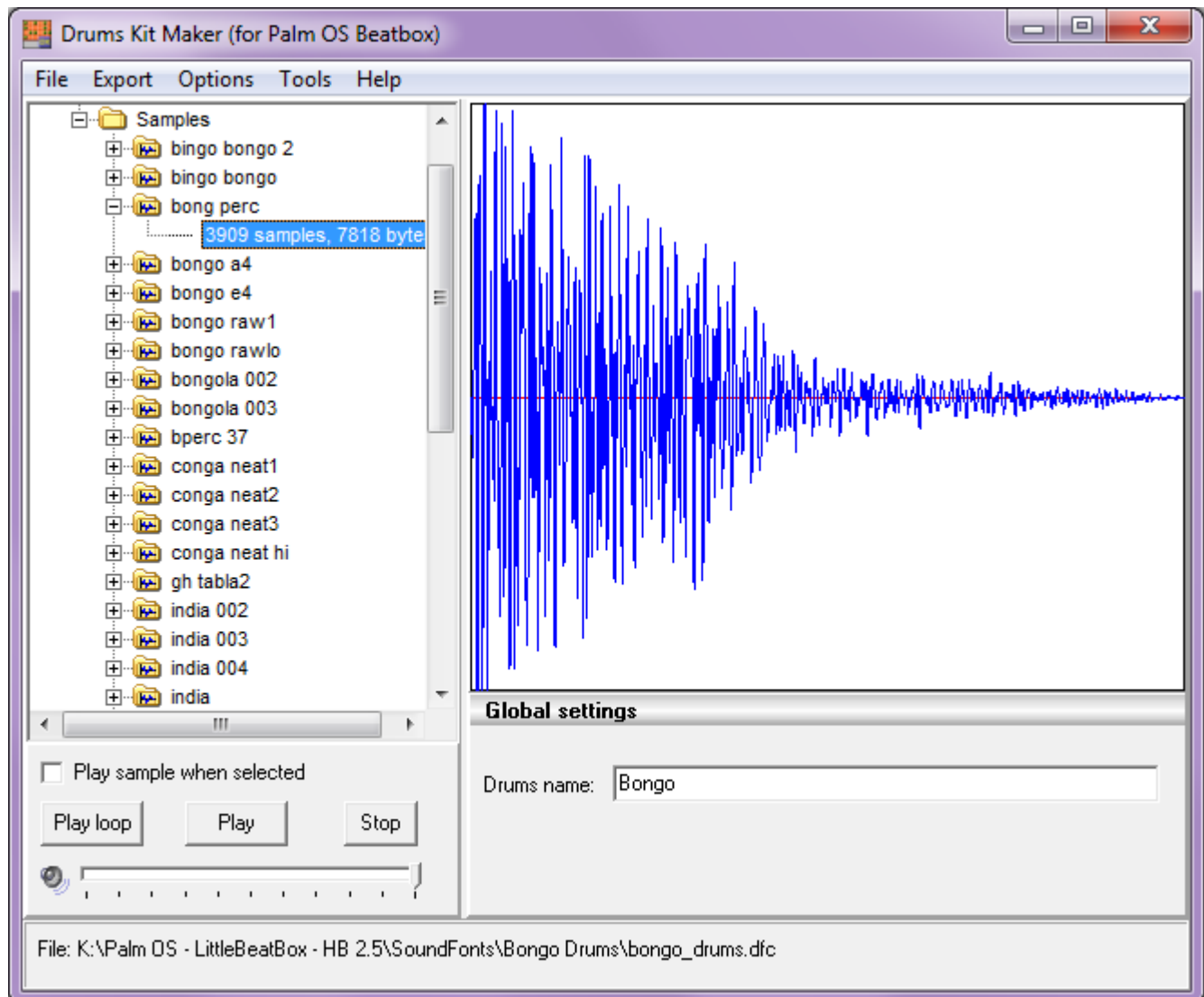
The small toolbar:



- ↑ Add current pattern (here A2) at the end of the song.
- ↑ Change a pattern with the one selected above (here A2).
- ↑ Remove
- ↑ Cut
- ↑ Copy
- ↑ Paste
- ↑ Select all patterns.
- ↑ Unselect all patterns.
- ↑ Remove all selected patterns.
- ↑ Change all selected patterns with the one selected above (here A2).

5/ Creating your own set of instruments

You can create your own set of instruments by using my drums kit maker software:

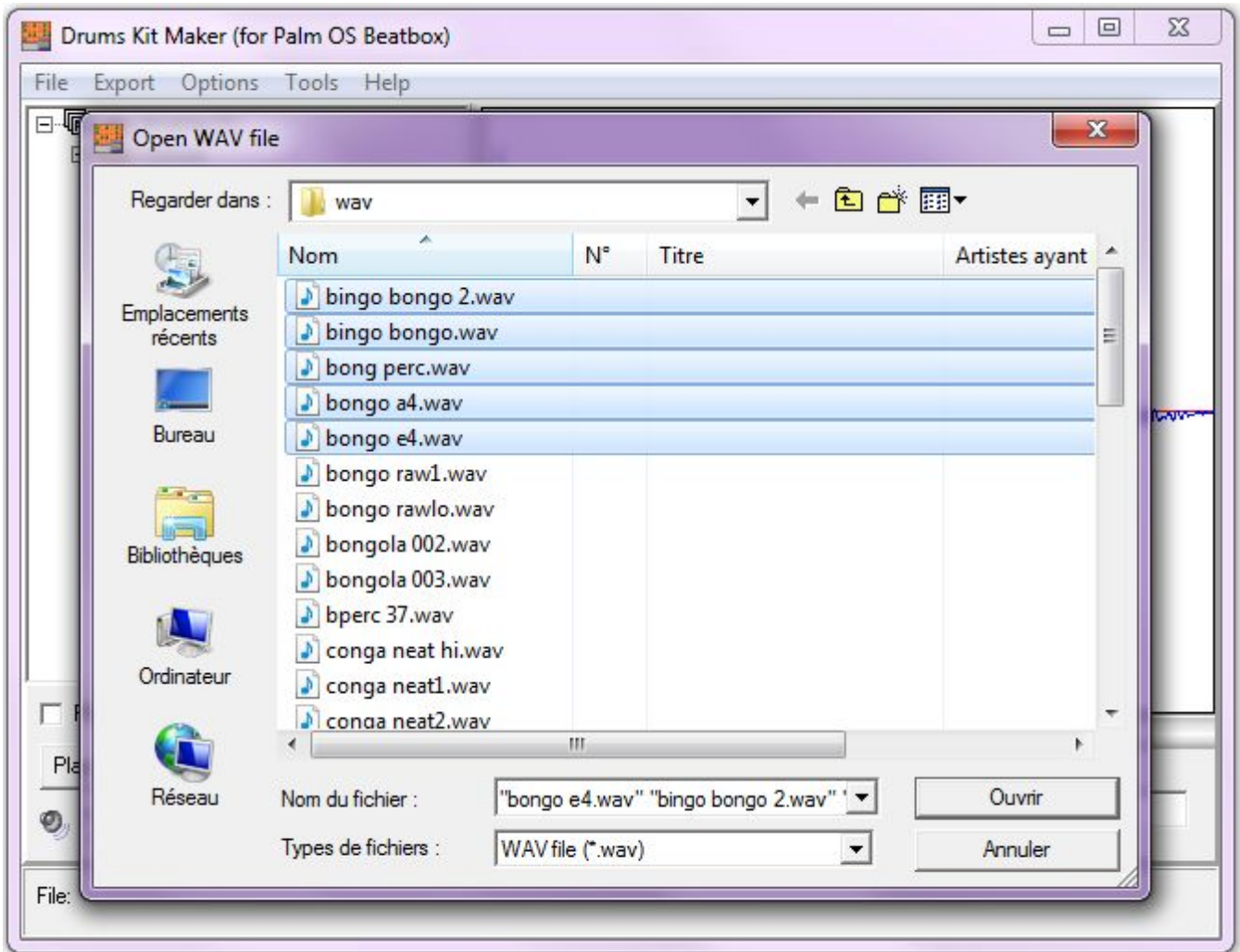


From main menu: File > New

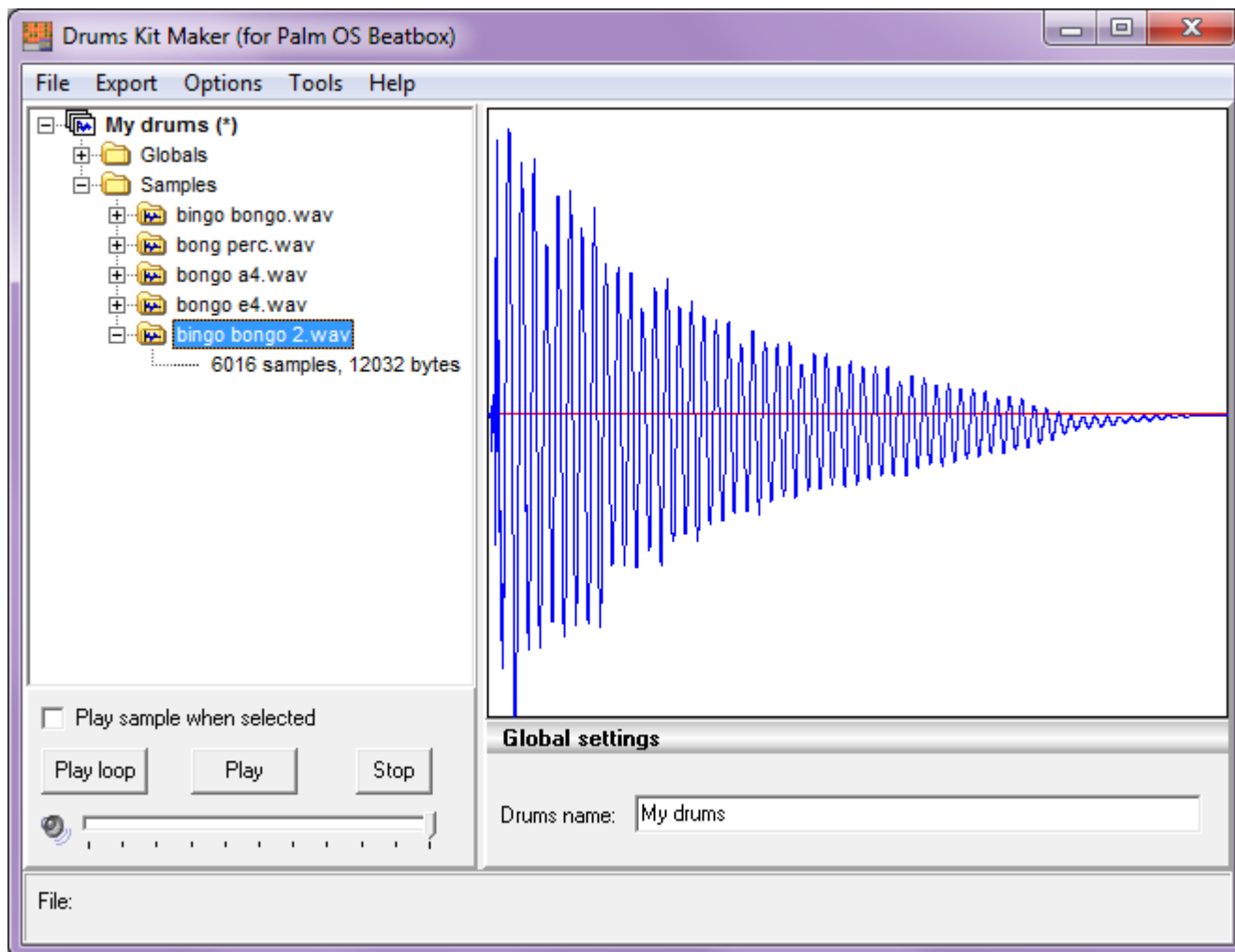
Then define the name of the package in the “Global settings” panel.

Let's add some sample: Right click within the left panel > Add new samples

wav sounds must be coded with these properties : uncompressed - 22050Hz – Mono – 16 bits.

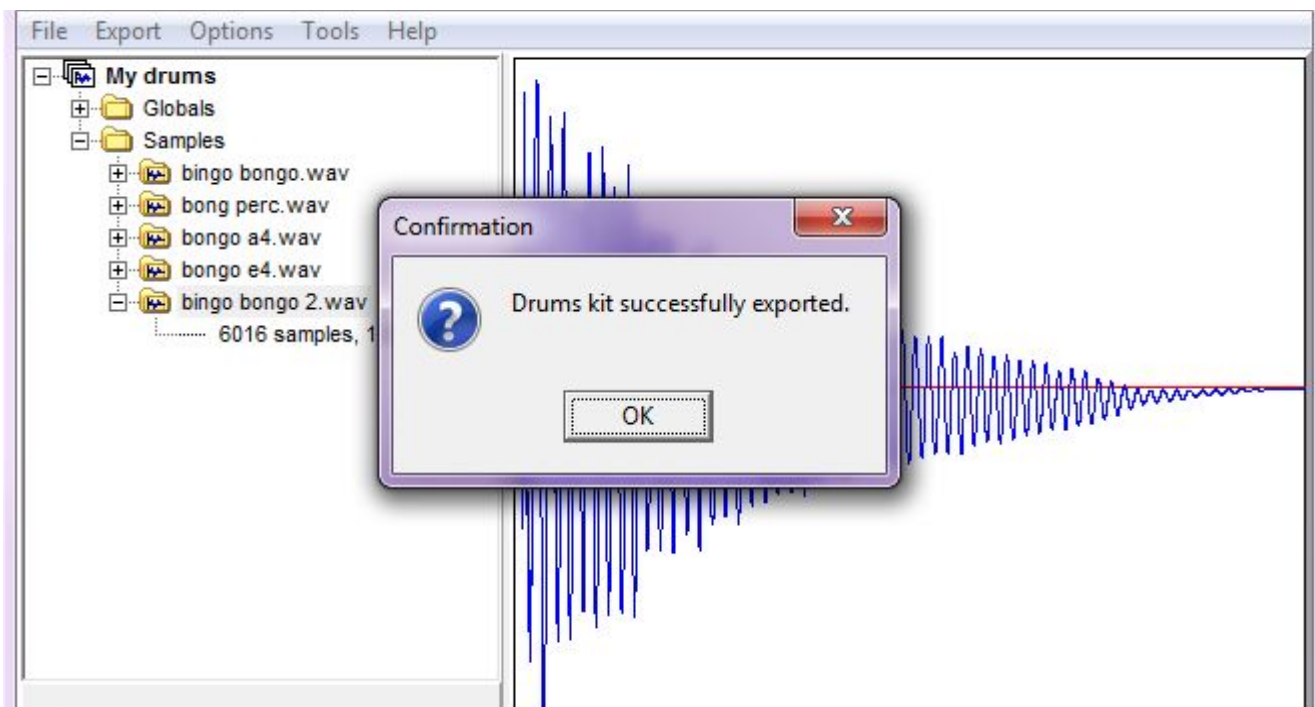
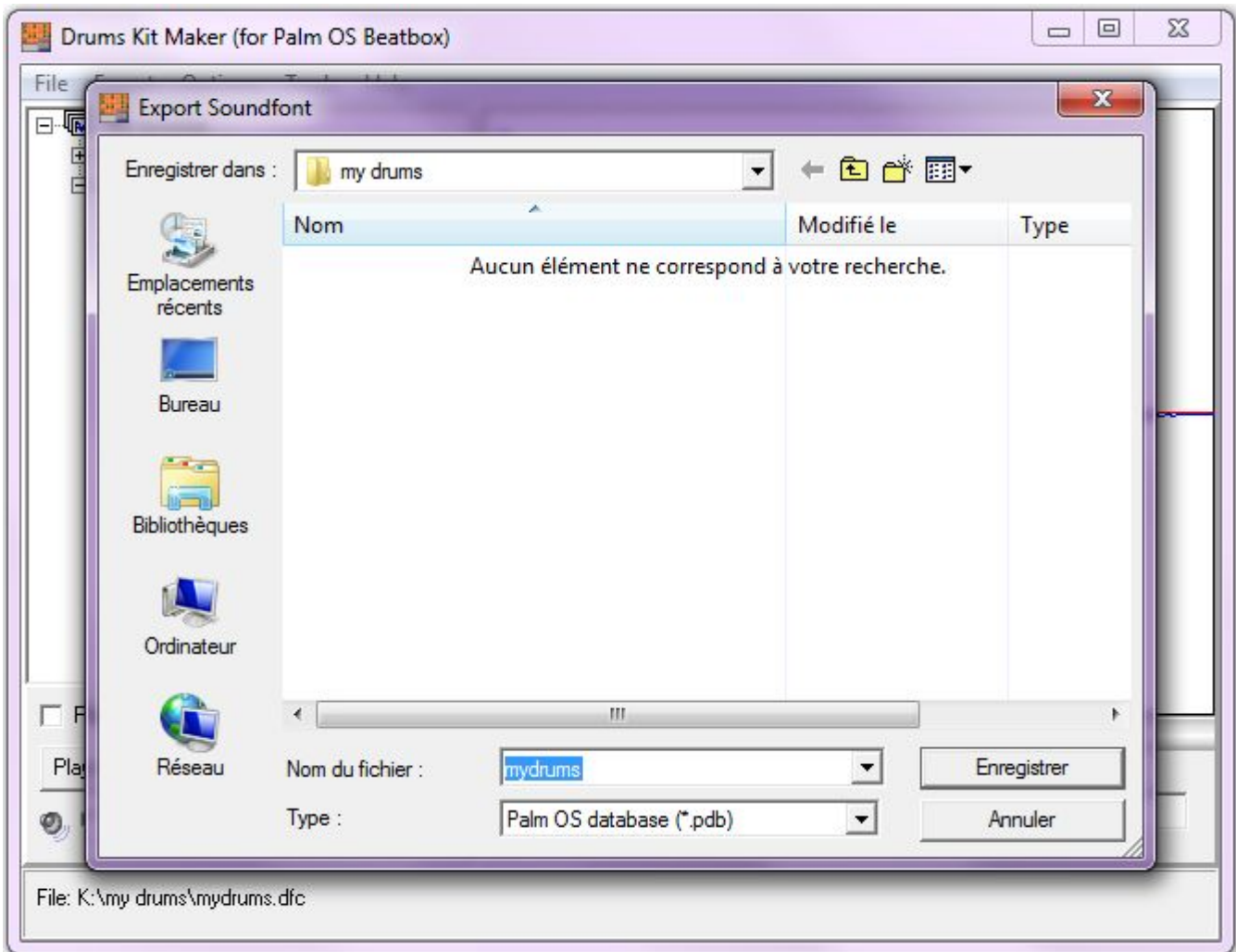


You can select several samples at once.

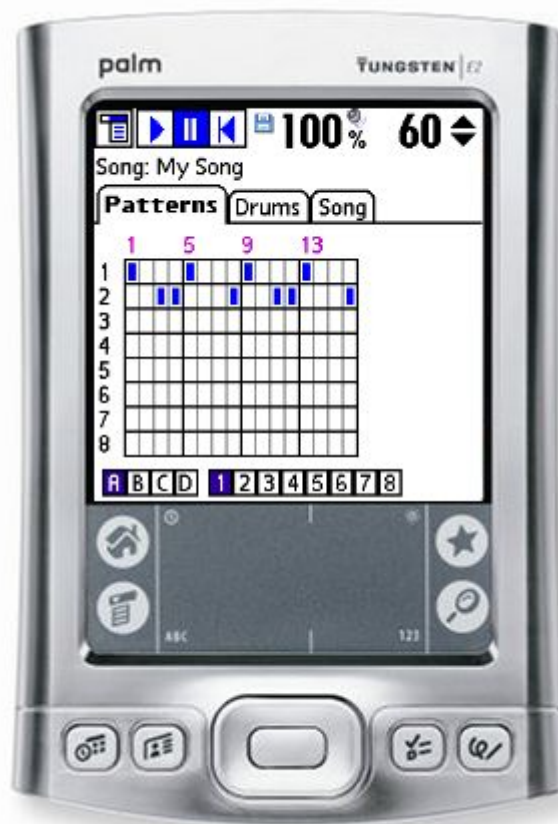
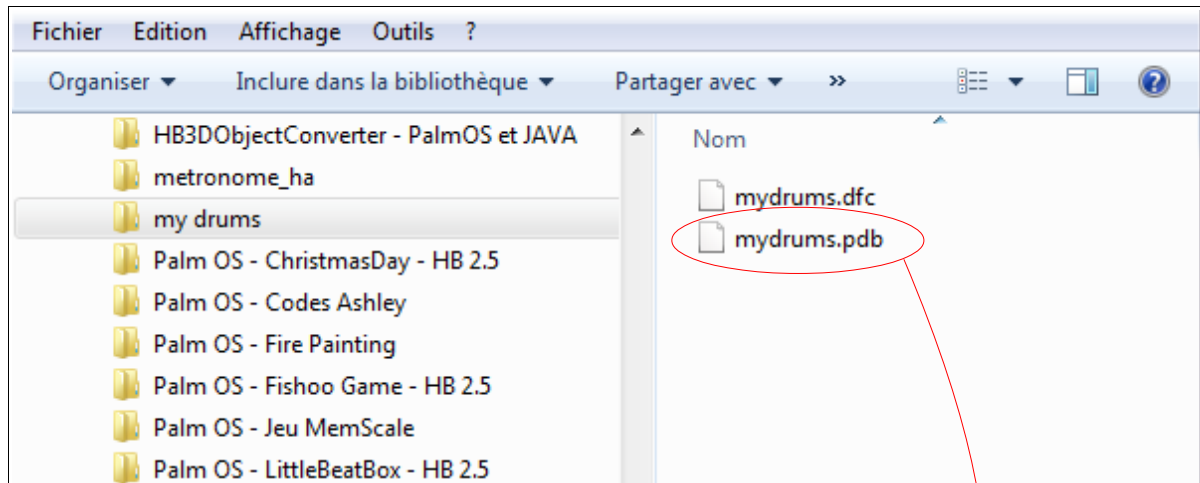


I will not detail all available commands as I think they are quite easy to understand.

Now, let's export our new set of instruments as Palm OS database: Export > As Palm OS Soundfont



Now, simply put this database in your Palm OS device and your sounds are available for Basic Beatbox!



Contact: eric.quagliozi@orange.fr